

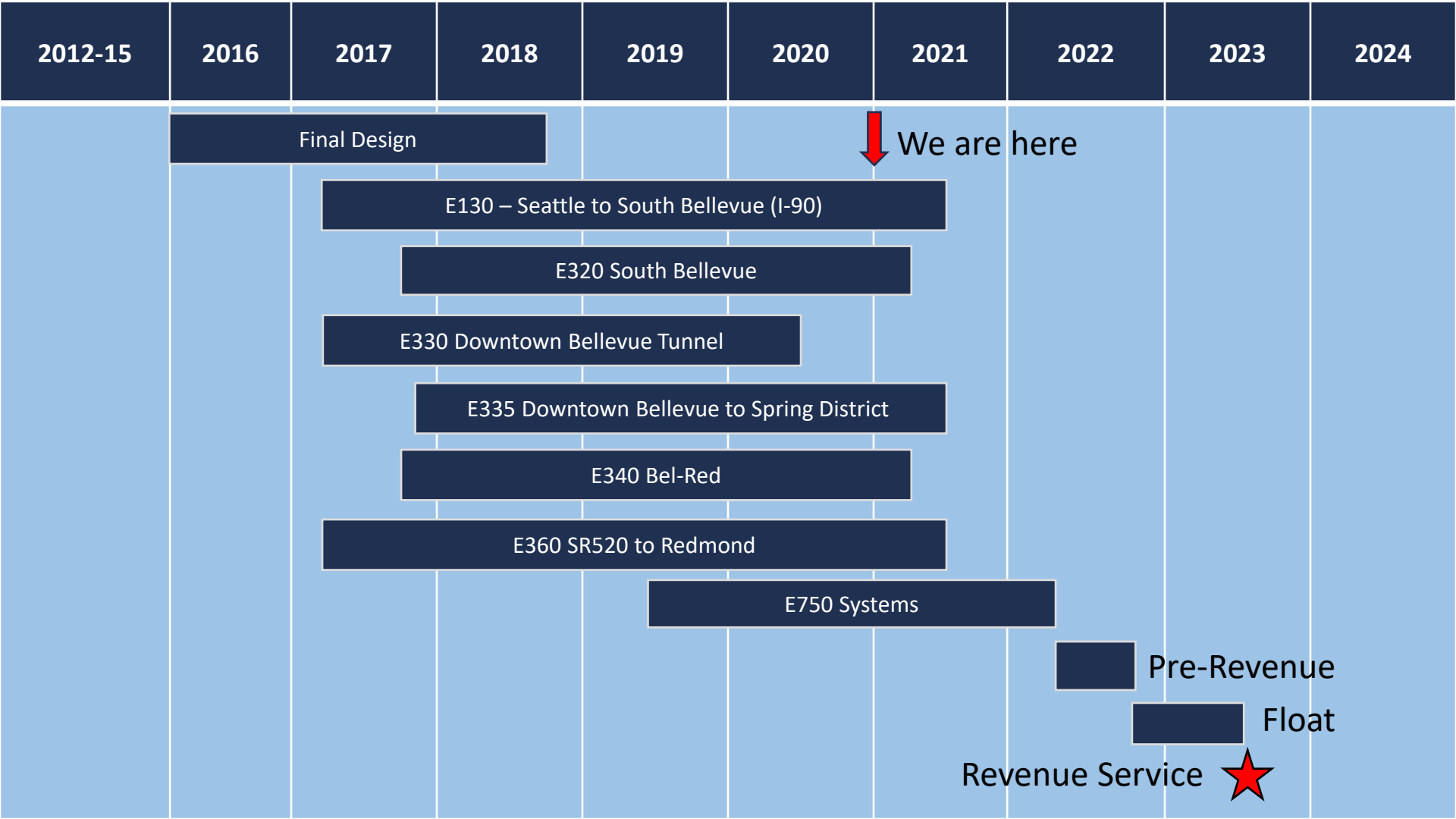
East Link Extension Update

System Expansion Committee

01/14/21

Why we are here

- Provide a project update on the East Link Extension construction progress
- Increase contract contingency request for:
 - E130 contingency increase request (M2021-04)
 - E340 contingency increase request (M2021-05)
 - E335 contingency increase request (M2021-06)



2012-15

2016

2017

2018

2019

2020

2021

2022

2023

2024

Final Design



We are here

E130 – Seattle to South Bellevue (I-90)

E320 South Bellevue

E330 Downtown Bellevue Tunnel

E335 Downtown Bellevue to Spring District

E340 Bel-Red

E360 SR520 to Redmond

E750 Systems

Pre-Revenue

Float

Revenue Service



Challenges / Upcoming Milestones

Challenges

- COVID-19 Impacts
- Station Schedules and Systems Access
- Redmond Technology Station Garage

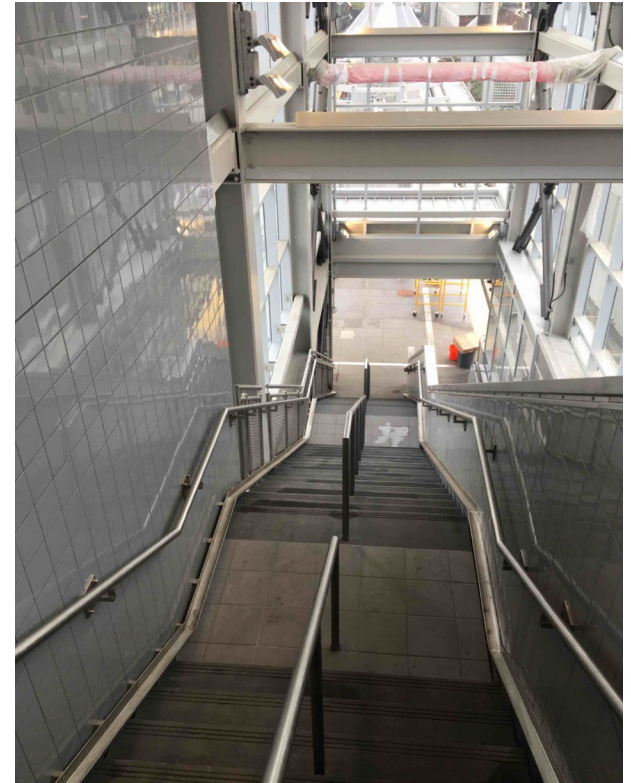
Upcoming Milestones

- Mercer Island Transit Interchange – Bids Due (Q1 2021)
- South Bellevue (E320) Substantial Completion (Q1 2021)
- Bel-Red (E340) Substantial Completion (Q1 2021)
- I-90 (E130) Substantial Completion (Q2 2021)
- Overlake (E360) Substantial Completion (Q2 2021)

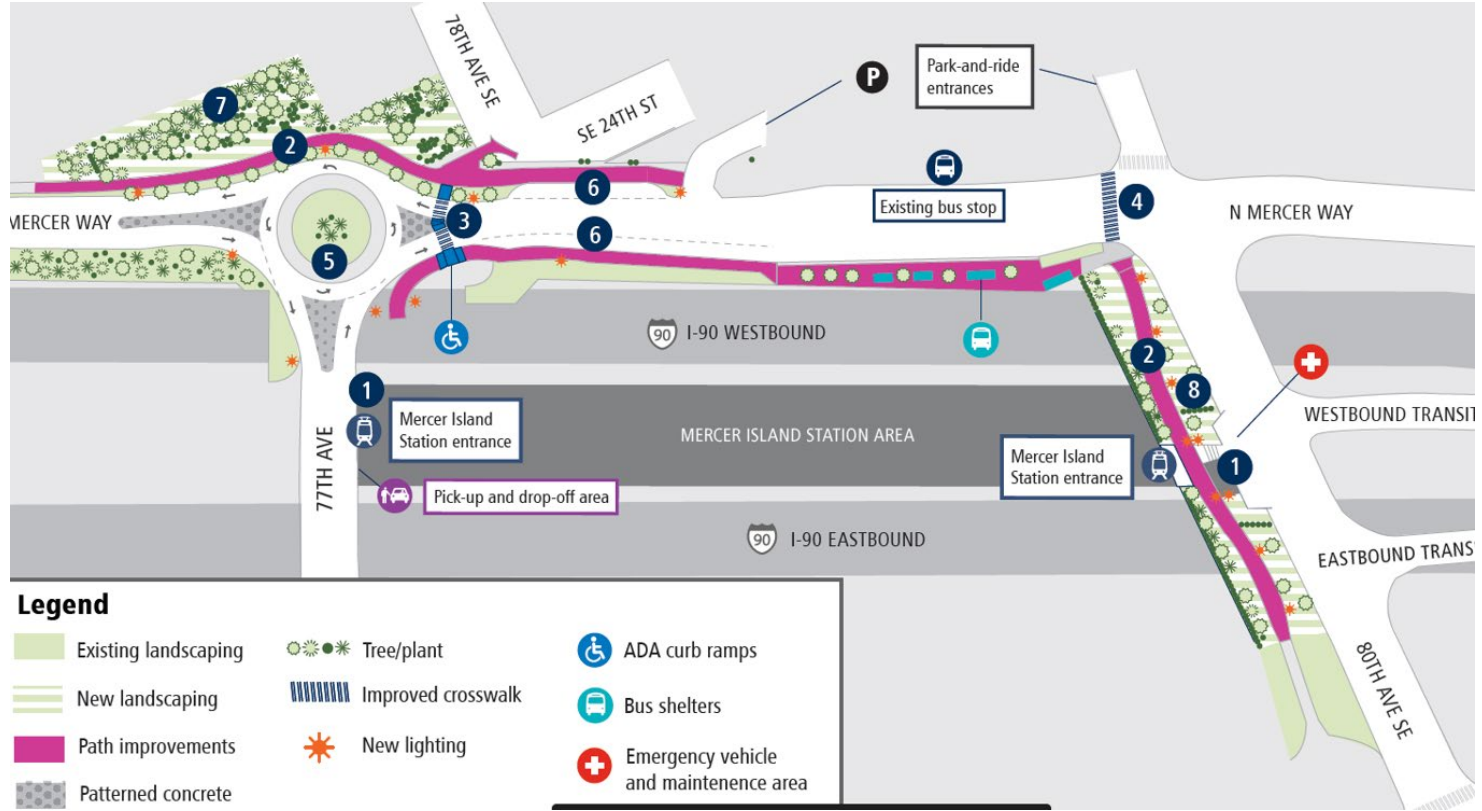
Judkins Park Station



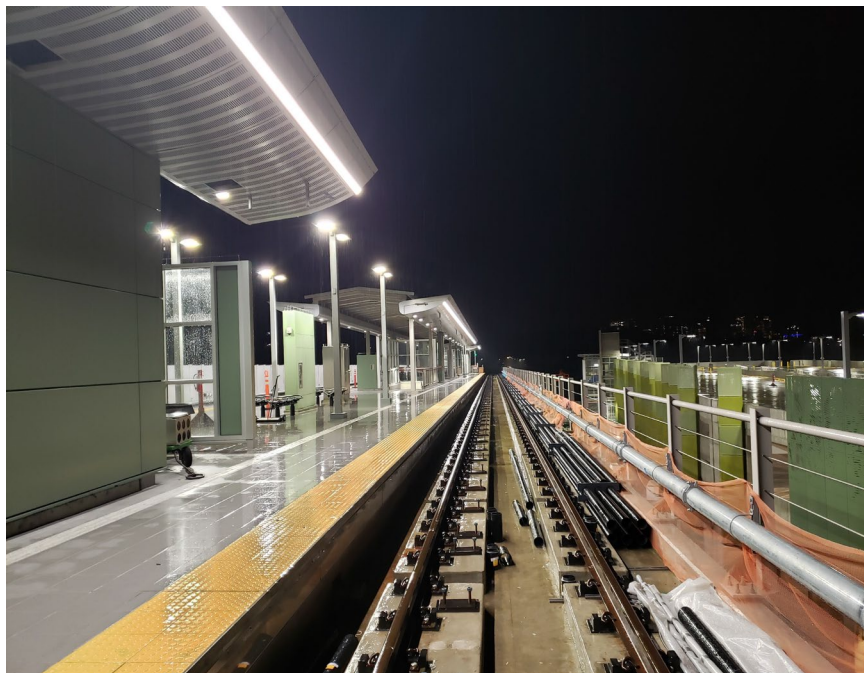
Mercer Island Station



Mercer Island Transit Interchange



South Bellevue Station



East Main Station



Bellevue Downtown Station



Wilburton Station



Spring District/120th Station



Bel-Red/130th Station



Overlake Village Station



Redmond Technology Station



Redmond Technology Station Garage



Q2 2021 Weekend Closures

- Weekend #1:
 - Pioneer Square Temp Platform Removal
- Weekend #2:
 - Signaling Work
 - Traction Power
- Weekend #3:
 - Pioneer Square Temp Platform Removal
- Weekend #4:
 - OCS work
 - Wire up D-2 Ramps and Turn-back Track
 - Traction Power
- Weekend #5:
 - Signals Testing



Financial Snapshot

Project Budget	\$3.677 B
Committed	\$3.258 B
Incurred	\$2.760 B

- Year of Expenditure \$
- Financials as of November 2020

- 90% complete
- Project baselined in April 2015

Today's Proposed Board Action

Increase Contract Contingency for Seattle to South Bellevue Segment (E130)

- M2021-04: Increase contract contingency with Kiewit-Hoffman, East Link Constructors for the Seattle to South Bellevue Segment (E130) in the amount of \$10,000,000, for a new total authorized contract amount not to exceed \$721,660,541, all within the Board approved project budget.
 - Increasing Contingency from 7% to 9%
 - Intended to capture developing and anticipated design changes through completion.
 - Additional contingency needed to offset cost of major change items, such as Connect 2020.

Today's Proposed Board Action

Increase Contract Contingency for Downtown Bellevue to Spring District Segment (E335)

- M2021-05: Increase contract contingency with Stacy and Witbeck/Atkinson, a Joint Venture for the Downtown Bellevue to Spring District Segment (E335) in the amount of \$10,000,000, for a new total authorized contract amount not to exceed \$423,488,121, all within the Board approved project budget.
 - Increasing Contingency from 5% to 8%
 - Intended to capture developing and anticipated design changes through completion.
 - Additional contingency needed to offset cost of change items, such as DOE Administrative Order and permit reviews.

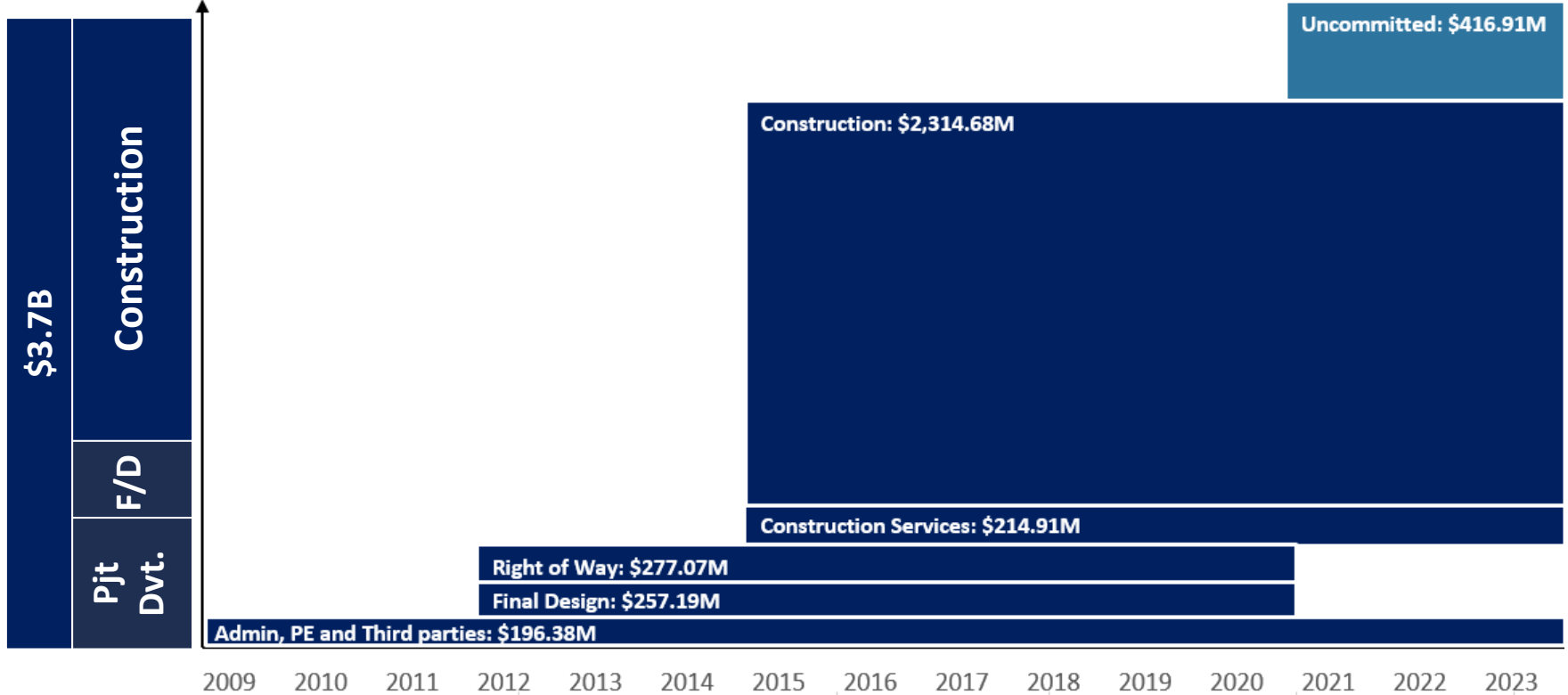
Today's Proposed Board Action

Increase Contract Contingency for Bel-Red Segment (E340)

- M2021-06: Increase contract contingency with Max J. Kuney Company for the Bel-Red Segment (E340) in the amount of \$5,000,000, for a new total authorized contract amount not to exceed \$107,487,012, all within the Board approved project budget.
 - Increasing Contingency from 10% to 15%
 - Intended to capture developing and anticipated design changes through completion.
 - Additional contingency needed to offset cost of unanticipated below grade changes.

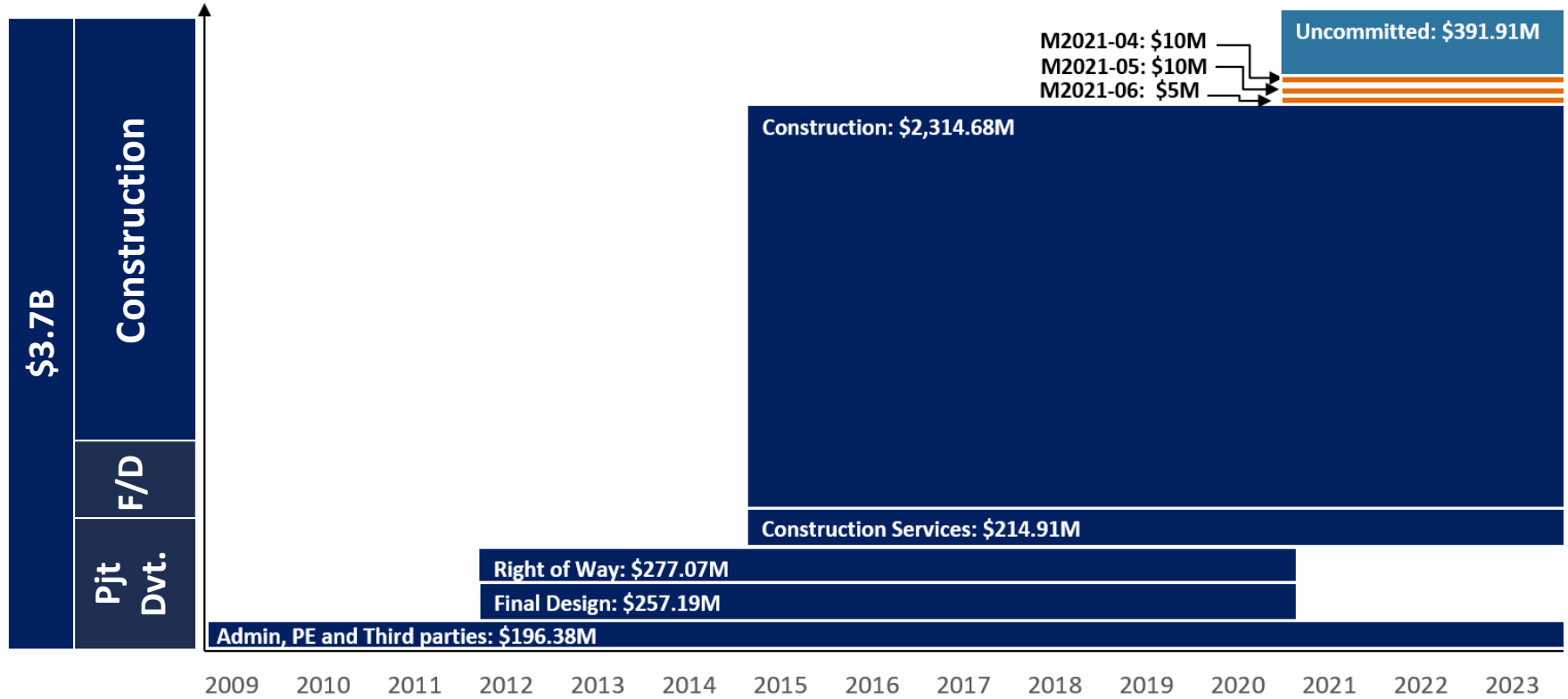
EAST LINK EXTENSION: Baseline Budget \$3.7B

ALLOCATION \$ COMMITMENTS



EAST LINK EXTENSION: Board Approves Contract Amendments \$25M

ALLOCATION \$ COMMITMENTS



Thank you.



 [soundtransit.org](https://www.soundtransit.org)

